

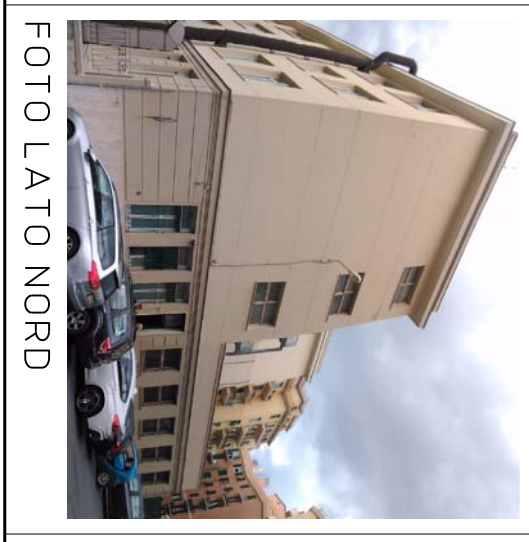
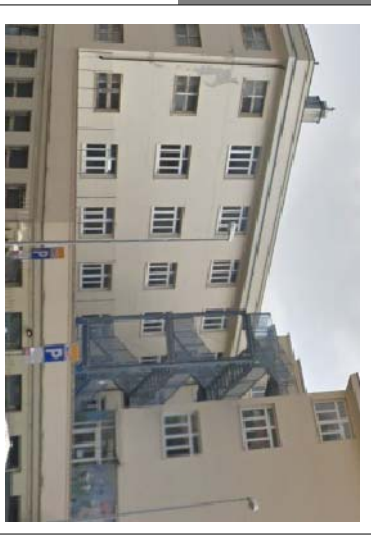
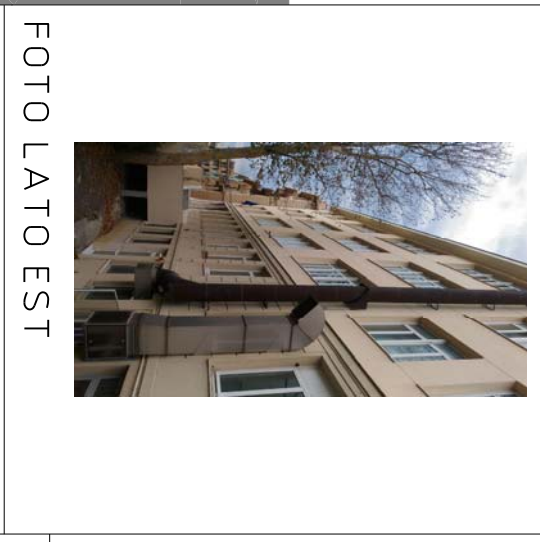
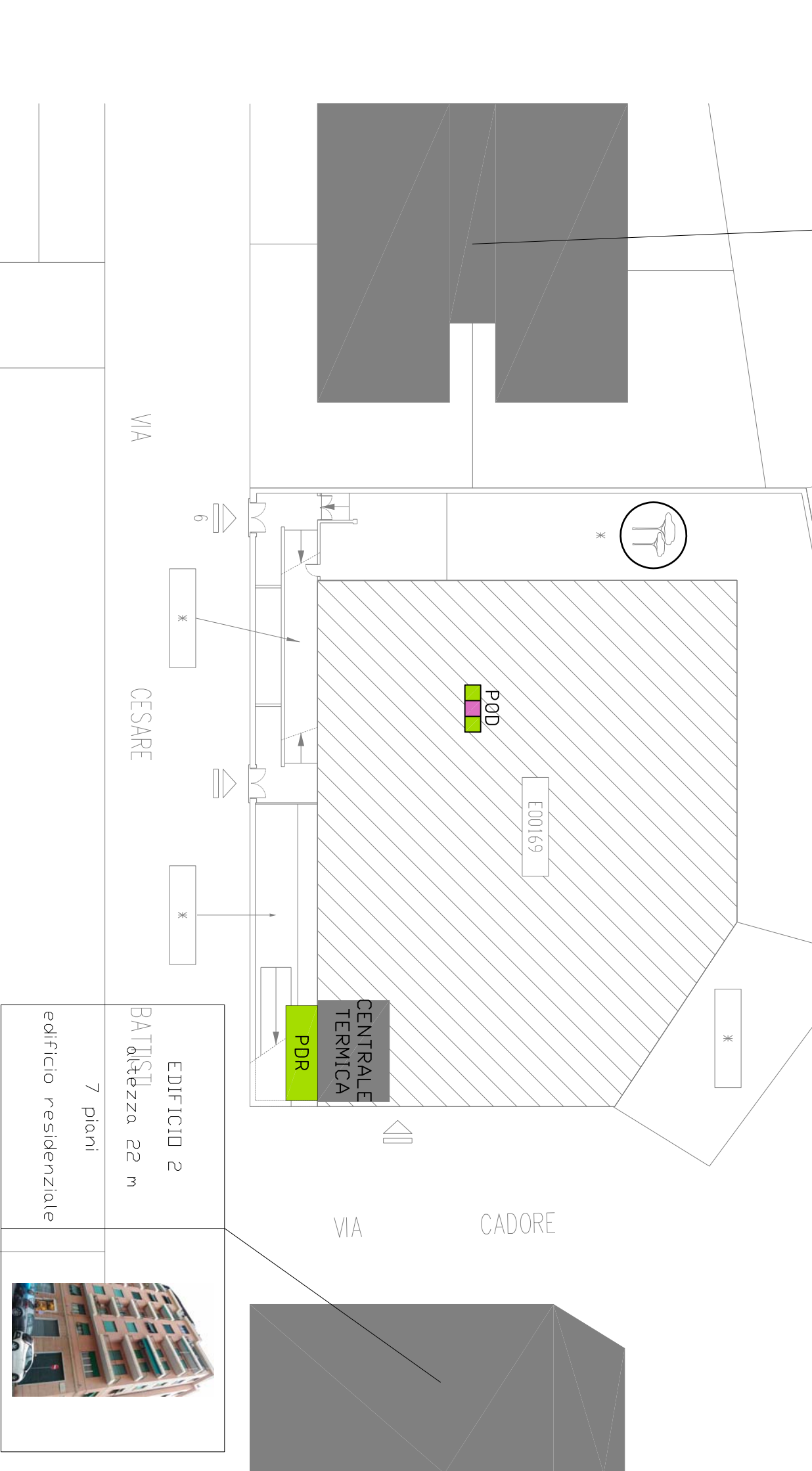


EDIFICIO 1  
 altezza 18 m  
 6 piani  
 edificio residenziale



EDIFICIO 3  
 altezza 15 m  
 5 piani  
 edificio scolastico

E169 - SCUOLA ELEMENTARE DIAZ,  
 SCUOLA COMUNALE INFANZIA S.PIETRO  
 E SCUOLA MEDIA DORIA-PASCOLI  
 ALLEGATO B

1. CONTESTO GEOGRAFICO E URBANO  
 SCALA -

SERVIZIO DI AUDIT E DIAGNOSI ENERGETICHE RELATIVE AGLI  
 EDIFICI SCOLASTICI DI PROPRIETA' DEL COMUNE DI GENOVA

LOTTO 8

Committente  
 COMUNE DI  
 GENOVA

ATI  
 Mandataria

